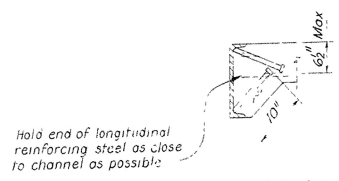
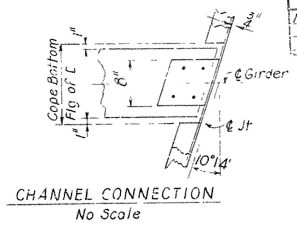
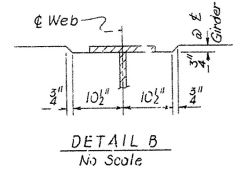
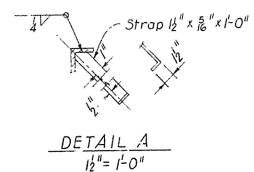


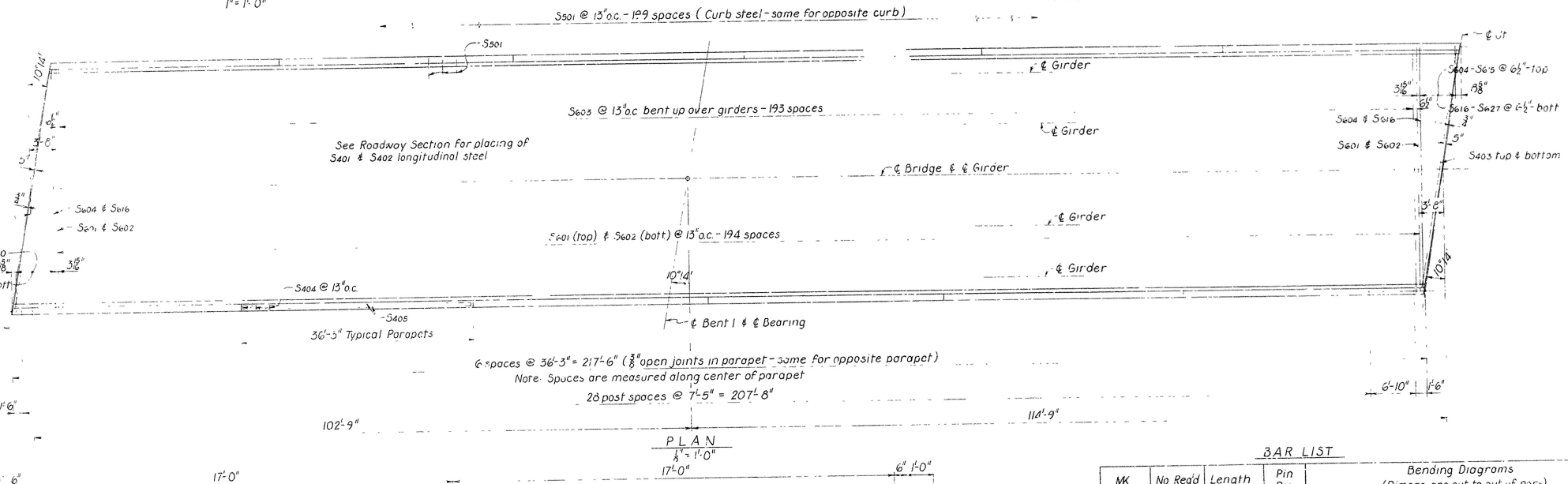
FED. ROAD NO.	STATE	FED. AID PROJ. NO.	FED. YEAR	SHEET NO.
11-24-67	ARK.	F-021	3(22)	3
JOB NO.	1429			



As an alternate for straps, $\frac{3}{8}$ " x 10" automatically welded stud anchors, granular flux filled, solid fluxed, or equal, may be used. $\frac{3}{8}$ " x 6" studs may also be used at the ratio of 1.33- $\frac{3}{8}$ " studs to 1.0 straps. Use weight of straps as basis of measurement of structural steel in anchors.



ALTERNATE ANCHORS
 $\frac{1}{2}$ " x 1'-0"



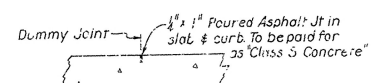
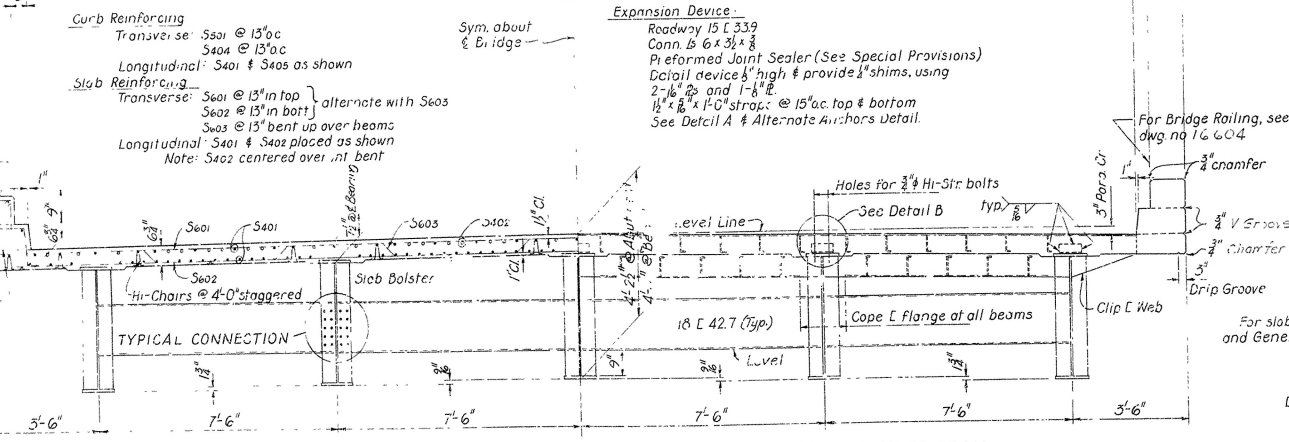
Expansion Device
Roadway 15' x 33'
Conn. B 6' x 3' x $\frac{3}{8}$ "
Prefabricated Joint Sealer (See Special Provisions)
Detail device 8" high & provide 8" shims, using 2- $\frac{1}{2}$ " x 6" and 1- $\frac{1}{2}$ " x 6"
 $\frac{1}{2}$ " x 6" x 1'-0" straps @ 15" o.c. top & bottom
See Detail A & Alternate Anchors detail.

BAR LIST

MK	No Req'd	Length	Pin Dia
S601	195	37'-7"	3"
S602	195	36'-6"	3"
S603	194	38'-9"	3"
S401	690	36'-3"	3"
S402	36	50'-0"	3"
S403	4	36'-6"	3"
S404	408	4'-6"	2"
S405	24	35'-9"	3"
S406	402	4'-5"	2"
S604 to S615	2 ea.	35'-1" to 2'-1"	3"
S616 to S627	2 ea.	34'-8" to 1'-8"	3"

Bending Diagrams (Dimens are out to out of bars)

The figure shows bending diagrams for reinforcement bars. The top diagram is for bar S603, showing a U-shaped profile with dimensions: 4'-11" (left), 3'-9" (top), 3'-9" (right), and 3'-9" (bottom). The bottom diagram is for bar S601, showing a U-shaped profile with dimensions: 3'-6" (top), 3'-9" (right), and 3'-9" (bottom). The middle diagram is for bar S602, showing a U-shaped profile with dimensions: 3'-6" (top), 3'-9" (right), and 3'-9" (bottom). The bottom diagram is for bar S603, showing a U-shaped profile with dimensions: 3'-6" (top), 3'-9" (right), and 3'-9" (bottom). The bottom diagram is for bar S604, showing a U-shaped profile with dimensions: 3'-6" (top), 3'-9" (right), and 3'-9" (bottom). The bottom diagram is for bar S605, showing a U-shaped profile with dimensions: 3'-6" (top), 3'-9" (right), and 3'-9" (bottom). The bottom diagram is for bar S606, showing a U-shaped profile with dimensions: 3'-6" (top), 3'-9" (right), and 3'-9" (bottom). The bottom diagram is for bar S607, showing a U-shaped profile with dimensions: 3'-6" (top), 3'-9" (right), and 3'-9" (bottom). The bottom diagram is for bar S608, showing a U-shaped profile with dimensions: 3'-6" (top), 3'-9" (right), and 3'-9" (bottom). The bottom diagram is for bar S609, showing a U-shaped profile with dimensions: 3'-6" (top), 3'-9" (right), and 3'-9" (bottom). The bottom diagram is for bar S610, showing a U-shaped profile with dimensions: 3'-6" (top), 3'-9" (right), and 3'-9" (bottom). The bottom diagram is for bar S611, showing a U-shaped profile with dimensions: 3'-6" (top), 3'-9" (right), and 3'-9" (bottom). The bottom diagram is for bar S612, showing a U-shaped profile with dimensions: 3'-6" (top), 3'-9" (right), and 3'-9" (bottom). The bottom diagram is for bar S613, showing a U-shaped profile with dimensions: 3'-6" (top), 3'-9" (right), and 3'-9" (bottom). The bottom diagram is for bar S614, showing a U-shaped profile with dimensions: 3'-6" (top), 3'-9" (right), and 3'-9" (bottom). The bottom diagram is for bar S615, showing a U-shaped profile with dimensions: 3'-6" (top), 3'-9" (right), and 3'-9" (bottom). The bottom diagram is for bar S616, showing a U-shaped profile with dimensions: 3'-6" (top), 3'-9" (right), and 3'-9" (bottom). The bottom diagram is for bar S617, showing a U-shaped profile with dimensions: 3'-6" (top), 3'-9" (right), and 3'-9" (bottom). The bottom diagram is for bar S618, showing a U-shaped profile with dimensions: 3'-6" (top), 3'-9" (right), and 3'-9" (bottom). The bottom diagram is for bar S619, showing a U-shaped profile with dimensions: 3'-6" (top), 3'-9" (right), and 3'-9" (bottom). The bottom diagram is for bar S620, showing a U-shaped profile with dimensions: 3'-6" (top), 3'-9" (right), and 3'-9" (bottom). The bottom diagram is for bar S621, showing a U-shaped profile with dimensions: 3'-6" (top), 3'-9" (right), and 3'-9" (bottom). The bottom diagram is for bar S622, showing a U-shaped profile with dimensions: 3'-6" (top), 3'-9" (right), and 3'-9" (bottom). The bottom diagram is for bar S623, showing a U-shaped profile with dimensions: 3'-6" (top), 3'-9" (right), and 3'-9" (bottom). The bottom diagram is for bar S624, showing a U-shaped profile with dimensions: 3'-6" (top), 3'-9" (right), and 3'-9" (bottom). The bottom diagram is for bar S625, showing a U-shaped profile with dimensions: 3'-6" (top), 3'-9" (right), and 3'-9" (bottom). The bottom diagram is for bar S626, showing a U-shaped profile with dimensions: 3'-6" (top), 3'-9" (right), and 3'-9" (bottom). The bottom diagram is for bar S627, showing a U-shaped profile with dimensions: 3'-6" (top), 3'-9" (right), and 3'-9" (bottom). The bottom diagram is for bar S628, showing a U-shaped profile with dimensions: 3'-6" (top), 3'-9" (right), and 3'-9" (bottom). The bottom diagram is for bar S629, showing a U-shaped profile with dimensions: 3'-6" (top), 3'-9" (right), and 3'-9" (bottom). The bottom diagram is for bar S630, showing a U-shaped profile with dimensions: 3'-6" (top), 3'-9" (right), and 3'-9" (bottom). The bottom diagram is for bar S631, showing a U-shaped profile with dimensions: 3'-6" (top), 3'-9" (right), and 3'-9" (bottom). The bottom diagram is for bar S632, showing a U-shaped profile with dimensions: 3'-6" (top), 3'-9" (right), and 3'-9" (bottom). The bottom diagram is for bar S633, showing a U-shaped profile with dimensions: 3'-6" (top), 3'-9" (right), and 3'-9" (bottom). The bottom diagram is for bar S634, showing a U-shaped profile with dimensions: 3'-6" (top), 3'-9" (right), and 3'-9" (bottom). The bottom diagram is for bar S635, showing a U-shaped profile with dimensions: 3'-6" (top), 3'-9" (right), and 3'-9" (bottom). The bottom diagram is for bar S636, showing a U-shaped profile with dimensions: 3'-6" (top), 3'-9" (right), and 3'-9" (bottom). The bottom diagram is for bar S637, showing a U-shaped profile with dimensions: 3'-6" (top), 3'-9" (right), and 3'-9" (bottom). The bottom diagram is for bar S638, showing a U-shaped profile with dimensions: 3'-6" (top), 3'-9" (right), and 3'-9" (bottom). The bottom diagram is for bar S639, showing a U-shaped profile with dimensions: 3'-6" (top), 3'-9" (right), and 3'-9" (bottom). The bottom diagram is for bar S640, showing a U-shaped profile with dimensions: 3'-6" (top), 3'-9" (right), and 3'-9" (bottom). The bottom diagram is for bar S641, showing a U-shaped profile with dimensions: 3'-6" (top), 3'-9" (right), and 3'-9" (bottom). The bottom diagram is for bar S642, showing a U-shaped profile with dimensions: 3'-6" (top), 3'-9" (right), and 3'-9" (bottom). The bottom diagram is for bar S643, showing a U-shaped profile with dimensions: 3'-6" (top), 3'-9" (right), and 3'-9" (bottom). The bottom diagram is for bar S644, showing a U-shaped profile with dimensions: 3'-6" (top), 3'-9" (right), and 3'-9" (bottom). The bottom diagram is for bar S645, showing a U-shaped profile with dimensions: 3'-6" (top), 3'-9" (right), and 3'-9" (bottom). The bottom diagram is for bar S646, showing a U-shaped profile with dimensions: 3'-6" (top), 3'-9" (right), and 3'-9" (bottom). The bottom diagram is for bar S647, showing a U-shaped profile with dimensions: 3'-6" (top), 3'-9" (right), and 3'-9" (bottom). The bottom diagram is for bar S648, showing a U-shaped profile with dimensions: 3'-6" (top), 3'-9" (right), and 3'-9" (bottom). The bottom diagram is for bar S649, showing a U-shaped profile with dimensions: 3'-6" (top), 3'-9" (right), and 3'-9" (bottom). The bottom diagram is for bar S650, showing a U-shaped profile with dimensions: 3'-6" (top), 3'-9" (right), and 3'-9" (bottom). The bottom diagram is for bar S651, showing a U-shaped profile with dimensions: 3'-6" (top), 3'-9" (right), and 3'-9" (bottom). The bottom diagram is for bar S652, showing a U-shaped profile with dimensions: 3'-6" (top), 3'-9" (right), and 3'-9" (bottom). The bottom diagram is for bar S653, showing a U-shaped profile with dimensions: 3'-6" (top), 3'-9" (right), and 3'-9" (bottom). The bottom diagram is for bar S654, showing a U-shaped profile with dimensions: 3'-6" (top), 3'-9" (right), and 3'-9" (bottom). The bottom diagram is for bar S655, showing a U-shaped profile with dimensions: 3'-6" (top), 3'-9" (right), and 3'-9" (bottom). The bottom diagram is for bar S656, showing a U-shaped profile with dimensions: 3'-6" (top), 3'-9" (right), and 3'-9" (bottom). The bottom diagram is for bar S657, showing a U-shaped profile with dimensions: 3'-6" (top), 3'-9" (right), and 3'-9" (bottom). The bottom diagram is for bar S658, showing a U-shaped profile with dimensions: 3'-6" (top), 3'-9" (right), and 3'-9" (bottom). The bottom diagram is for bar S659, showing a U-shaped profile with dimensions: 3'-6" (top), 3'-9" (right), and 3'-9" (bottom). The bottom diagram is for bar S660, showing a U-shaped profile with dimensions: 3'-6" (top), 3'-9" (right), and 3'-9" (bottom). The bottom diagram is for bar S661, showing a U-shaped profile with dimensions: 3'-6" (top), 3'-9" (right), and 3'-9" (bottom). The bottom diagram is for bar S662, showing a U-shaped profile with dimensions: 3'-6" (top), 3'-9" (right), and 3'-9" (bottom). The bottom diagram is for bar S663, showing a U-shaped profile with dimensions: 3'-6" (top), 3'-9" (right), and 3'-9" (bottom). The bottom diagram is for bar S664, showing a U-shaped profile with dimensions: 3'-6" (top), 3'-9" (right), and 3'-9" (bottom). The bottom diagram is for bar S665, showing a U-shaped profile with dimensions: 3'-6" (top), 3'-9" (right), and 3'-9" (bottom). The bottom diagram is for bar S666, showing a U-shaped profile with dimensions: 3'-6" (top), 3'-9" (right), and 3'-9" (bottom). The bottom diagram is for bar S667, showing a U-shaped profile with dimensions: 3'-6" (top), 3'-9" (right), and 3'-9" (bottom). The bottom diagram is for bar S668, showing a U-shaped profile with dimensions: 3'-6" (top), 3'-9" (right), and 3'-9" (bottom). The bottom diagram is for bar S669, showing a U-shaped profile with dimensions: 3'-6" (top), 3'-9" (right), and 3'-9" (bottom). The bottom diagram is for bar S670, showing a U-shaped profile with dimensions: 3'-6" (top), 3'-9" (right), and 3'-9" (bottom). The bottom diagram is for bar S671, showing a U-shaped profile with dimensions: 3'-6" (top), 3'-9" (right), and 3'-9" (bottom). The bottom diagram is for bar S672, showing a U-shaped profile with dimensions: 3'-6" (top), 3'-9" (right), and 3'-9" (bottom). The bottom diagram is for bar S673, showing a U-shaped profile with dimensions: 3'-6" (top), 3'-9" (right), and 3'-9" (bottom). The bottom diagram is for bar S674, showing a U-shaped profile with dimensions: 3'-6" (top), 3'-9" (right), and 3'-9" (bottom). The bottom diagram is for bar S675, showing a U-shaped profile with dimensions: 3'-6" (top), 3'-9" (right), and 3'-9" (bottom). The bottom diagram is for bar S676, showing a U-shaped profile with dimensions: 3'-6" (top), 3'-9" (right), and 3'-9" (bottom). The bottom diagram is for bar S677, showing a U-shaped profile with dimensions: 3'-6" (top), 3'-9" (right), and 3'-9" (bottom). The bottom diagram is for bar S678, showing a U-shaped profile with dimensions: 3'-6" (top), 3'-9" (right), and 3'-9" (bottom). The bottom diagram is for bar S679, showing a U-shaped profile with dimensions: 3'-6" (top), 3'-9" (right), and 3'-9" (bottom). The bottom diagram is for bar S680, showing a U-shaped profile with dimensions: 3'-6" (top), 3'-9" (right), and 3'-9" (bottom). The bottom diagram is for bar S681, showing a U-shaped profile with dimensions: 3'-6" (top), 3'-9" (right), and 3'-9" (bottom). The bottom diagram is for bar S682, showing a U-shaped profile with dimensions: 3'-6" (top), 3'-9" (right), and 3'-9" (bottom). The bottom diagram is for bar S683, showing a U-shaped profile with dimensions: 3'-6" (top), 3'-9" (right), and 3'-9" (bottom). The bottom diagram is for bar S684, showing a U-shaped profile with dimensions: 3'-6" (top), 3'-9" (right), and 3'-9" (bottom). The bottom diagram is for bar S685, showing a U-shaped profile with dimensions: 3'-6" (top), 3'-9" (right), and 3'-9" (bottom). The bottom diagram is for bar S686, showing a U-shaped profile with dimensions: 3'-6" (top), 3'-9" (right), and 3'-9" (bottom). The bottom diagram is for bar S687, showing a U-shaped profile with dimensions: 3'-6" (top), 3'-9" (right), and 3'-9" (bottom). The bottom diagram is for bar S688, showing a U-shaped profile with dimensions: 3'-6" (top), 3'-9" (right), and 3'-9" (bottom). The bottom diagram is for bar S689, showing a U-shaped profile with dimensions: 3'-6" (top), 3'-9" (right), and 3'-9" (bottom). The bottom diagram is for bar S690, showing a U-shaped profile with dimensions: 3'-6" (top), 3'-9" (right), and 3'-9" (bottom). The bottom diagram is for bar S691, showing a U-shaped profile with dimensions: 3'-6" (top), 3'-9" (right), and 3'-9" (bottom). The bottom diagram is for bar S692, showing a U-shaped profile with dimensions: 3'-6" (top), 3'-9" (right), and 3'-9" (bottom). The bottom diagram is for bar S693, showing a U-shaped profile with dimensions: 3'-6" (top), 3'-9" (right), and 3'-9" (bottom). The bottom diagram is for bar S694, showing a U-shaped profile with dimensions: 3'-6" (top), 3'-9" (right), and 3'-9" (bottom). The bottom diagram is for bar S695, showing a U-shaped profile with dimensions: 3'-6" (top), 3'-9" (right), and 3'-9" (bottom). The bottom diagram is for bar S696, showing a U-shaped profile with dimensions: 3'-6" (top), 3'-9" (right), and 3'-9" (bottom). The bottom diagram is for bar S697, showing a U-shaped profile with dimensions: 3'-6" (top), 3'-9" (right), and 3'-9" (bottom). The bottom diagram is for bar S698, showing a U-shaped profile with dimensions: 3'-6" (top), 3'-9" (right), and 3'-9" (bottom). The bottom diagram is for bar S699, showing a U-shaped profile with dimensions: 3'-6" (top), 3'-9" (right), and 3'-9" (bottom). The bottom diagram is for bar S700, showing a U-shaped profile with dimensions: 3'-6" (top), 3'-9" (right), and 3'-9" (bottom). The bottom diagram is for bar S701, showing a U-shaped profile with dimensions: 3'-6" (top), 3'-9" (right), and 3'-9" (bottom). The bottom diagram is for bar S702, showing a U-shaped profile with dimensions: 3'-6" (top), 3'-9" (right), and 3'-9" (bottom). The bottom diagram is for bar S703, showing a U-shaped profile with dimensions: 3'-6" (top), 3'-9" (right), and 3'-9" (bottom). The bottom diagram is for bar S704, showing a U-shaped profile with dimensions: 3'-6" (top), 3'-9" (right), and 3'-9" (bottom). The bottom diagram is for bar S705, showing a U-shaped profile with dimensions: 3'-6" (top), 3'-9" (right), and 3'-9" (bottom). The bottom diagram is for bar S706, showing a U-shaped profile with dimensions: 3'-6" (top), 3'-9" (right), and 3'-9" (bottom). The bottom diagram is for bar S707, showing a U-shaped profile with dimensions: 3'-6" (top), 3'-9" (right), and 3'-9" (bottom). The bottom diagram is for bar S708, showing a U-shaped profile with dimensions: 3'-6" (top), 3'-9" (right), and 3'-9" (bottom). The bottom diagram is for bar S709, showing a U-shaped profile with dimensions: 3'-6" (top), 3'-9" (right), and 3'-9" (bottom). The bottom diagram is for bar S710, showing a U-shaped profile with dimensions: 3'-6" (top), 3'-9" (right), and 3'-9" (bottom). The bottom diagram is for bar S711, showing a U-shaped profile with dimensions: 3'-6" (top), 3'-9" (right), and 3'-9" (bottom). The bottom diagram is for bar S712, showing a U-shaped profile with dimensions: 3'-6" (top), 3'-9" (right), and 3'-9" (bottom). The bottom diagram is for bar S713, showing a U-shaped profile with dimensions: 3'-6" (top), 3'-9" (right), and 3'-9" (bottom). The bottom diagram is for bar S714, showing a U-shaped profile with dimensions: 3'-6" (top), 3'-9" (right), and 3'-9" (bottom). The bottom diagram is for bar S715, showing a U-shaped profile with dimensions: 3'-6" (top), 3'-9" (right), and 3'-9" (bottom). The bottom diagram is for bar S716, showing a U-shaped profile with dimensions: 3'-6" (top), 3'-9" (right), and 3'-9" (bottom). The bottom diagram is for bar S717, showing a U-shaped profile with dimensions: 3'-6" (top), 3'-9" (right), and 3'-9" (bottom). The bottom diagram is for bar S718, showing a U-shaped profile with dimensions: 3'-6" (top), 3'-9" (right), and 3'-9" (bottom). The bottom diagram is for bar S719, showing a U-shaped profile with dimensions: 3'-6" (top), 3'-9" (right), and 3'-9" (bottom). The bottom diagram is for bar S720, showing a U-shaped profile with dimensions: 3'-6" (top), 3'-9" (right), and 3'-9" (bottom). The bottom diagram is for bar S721, showing a U-shaped profile with dimensions: 3'-6" (top), 3'-9" (right), and 3'-9" (bottom). The bottom diagram is for bar S722, showing a U-shaped profile with dimensions: 3'-6" (top), 3'-9" (right), and 3'-9" (bottom). The bottom diagram is for bar S723, showing a U-shaped profile with dimensions: 3'-6" (top), 3'-9" (right), and 3'-9" (bottom). The bottom diagram is for bar S724, showing a U-shaped profile with dimensions: 3'-6" (top), 3'-9" (right), and 3'-9" (bottom). The bottom diagram is for bar S725, showing a U-shaped profile with dimensions: 3'-6" (top), 3'-9" (right), and 3'-9" (bottom). The bottom diagram is for bar S726, showing a U-shaped profile with dimensions: 3'-6" (top), 3'-9" (right), and 3'-9" (bottom). The bottom diagram is for bar S727, showing a U-shaped profile with dimensions: 3'-6" (top), 3'-9" (right), and 3'-9" (bottom). The bottom diagram is for bar S728, showing a U-shaped profile with dimensions: 3'-6" (top), 3'-9" (right), and 3'-9" (bottom). The bottom diagram is for bar S729, showing a U-shaped profile with dimensions: 3'-6" (top), 3'-9" (right), and 3'-9" (bottom). The bottom diagram is for bar S730, showing a U-shaped profile with dimensions: 3'-6" (top), 3'-9" (right), and 3'-9" (bottom). The bottom diagram is for bar S731, showing a U-shaped profile with dimensions: 3'-6" (top), 3'-9" (right), and 3'-9" (bottom). The bottom diagram is for bar S732, showing a U-shaped profile with dimensions: 3'-6" (top), 3'-9" (right), and 3'-9" (bottom). The bottom diagram is for bar S733, showing a U-shaped profile with dimensions: 3'-6" (top), 3'-9" (right), and 3'-9" (bottom). The bottom diagram is for bar S734, showing a U-shaped profile with dimensions: 3'-6" (top), 3'-9" (right), and 3'-9" (bottom). The bottom diagram is for bar S735, showing a U-shaped profile with dimensions: 3'-6" (top), 3'-9" (right), and 3'-9" (bottom). The bottom diagram is for bar S736, showing a U-shaped profile with dimensions: 3'-6" (top), 3'-9" (right), and 3'-9" (bottom). The bottom diagram is for bar S737, showing a U-shaped profile with dimensions: 3'-6" (top), 3'-9" (right), and 3'-9" (bottom). The bottom diagram is for bar S738, showing a U-shaped profile with dimensions: 3'-6" (top), 3'-9" (right), and 3'-9" (bottom). The bottom diagram is for bar S739, showing a U-shaped profile with dimensions: 3'-6" (top), 3'-9" (right), and 3'-9" (bottom). The bottom diagram is for bar S740, showing a U-shaped profile with dimensions: 3'-6" (top), 3'-9" (right), and 3'-9" (bottom). The bottom diagram is for bar S741, showing a U-shaped profile with dimensions: 3'-6" (top), 3'-9" (right), and 3'-9" (bottom). The bottom diagram is for bar S742, showing a U-shaped profile with dimensions: 3'-6" (top), 3'-9" (right), and 3'-9" (bottom). The bottom diagram is for bar S743, showing a U-shaped profile with dimensions: 3'-6" (top), 3'-9" (right), and 3'-9" (bottom). The bottom diagram is for bar S744, showing a U-shaped profile with dimensions: 3'-6" (top), 3'-9" (right), and 3'-9" (bottom). The bottom diagram is for bar S745, showing a U-shaped profile with dimensions: 3'-6" (top), 3'-9" (right), and 3'-9" (bottom). The bottom diagram is for bar S746, showing a U-shaped profile with dimensions: 3'-6" (top), 3'-9" (right), and 3'-9" (bottom). The bottom diagram is for bar S747, showing a U-shaped profile with dimensions: 3'-6" (top), 3'-9" (right), and 3'-9" (bottom). The bottom diagram is for bar S748, showing a U-shaped profile with dimensions: 3'-6" (top), 3'-9" (right), and 3'-9" (bottom). The bottom diagram is for bar S749, showing a U-shaped profile with dimensions: 3'-6" (top), 3'-9" (right), and 3'-9" (bottom). The bottom diagram is for bar S750, showing a U-shaped profile with dimensions: 3'-6" (top), 3'-9" (right), and 3'-9" (bottom). The bottom diagram is for bar S751, showing a U-shaped profile with dimensions: 3'-6" (top), 3'-9" (right), and 3'-9" (bottom). The bottom diagram is for bar S752, showing a U-shaped profile with dimensions: 3'-6" (top), 3'-9" (right), and 3'-9" (bottom). The bottom diagram is for bar S753, showing a U-shaped profile with dimensions: 3'-6" (top), 3'-9" (right), and 3'-9" (bottom). The bottom diagram is for bar S754, showing a U-shaped profile with dimensions: 3'-6" (top), 3'-9" (right), and 3'-9" (bottom). The bottom diagram is for bar S755, showing a U-shaped profile with dimensions: 3'-6" (top), 3'-9" (right), and 3'-9" (bottom). The bottom diagram is for bar S756, showing a U-shaped profile with dimensions: 3'-6" (top), 3'-9" (right), and 3'-9" (bottom). The bottom diagram is for bar S757, showing a U-shaped profile with dimensions: 3'-6" (top), 3'-9" (right), and 3'-9" (bottom). The bottom diagram is for bar S758, showing a U-shaped profile with dimensions: 3'-6" (top), 3'-9" (right), and 3'-9" (bottom). The bottom diagram is for bar S759, showing a U-shaped profile with dimensions: 3'-6" (top), 3'-9" (right), and 3'-9" (bottom). The bottom diagram is for bar S760, showing a U-shaped profile with dimensions: 3'-6" (top), 3'-9" (right), and 3'-9" (bottom). The bottom diagram is for bar S761, showing a U-shaped profile with dimensions: 3'-6" (top), 3'-9" (right), and 3'-9" (bottom). The bottom diagram is for bar S762, showing a U-shaped profile with dimensions: 3'-6" (top), 3'-9" (right), and 3'-9" (bottom). The bottom diagram is for bar S763, showing a U-shaped profile with dimensions: 3'-6" (top), 3'-9" (right), and 3'-9" (bottom). The bottom diagram is for bar S764, showing a U-shaped profile with dimensions: 3'-6" (top), 3'-9" (right), and 3'-9" (bottom). The bottom diagram is for bar S765, showing a U-shaped profile with dimensions: 3'-6" (top), 3'-9" (right), and 3'-9" (bottom). The bottom diagram is for bar S766, showing a U-shaped profile with dimensions: 3'-6" (top), 3'-9" (right), and 3'-9" (bottom). The bottom diagram is for bar S767, showing a U-shaped profile with dimensions: 3'-6" (top), 3'-9" (right), and 3'-9" (bottom). The bottom diagram is for bar S768, showing a U-shaped profile with dimensions: 3'-6" (top), 3'-9" (right), and 3'-9" (bottom). The bottom diagram is for bar S769, showing a U-shaped profile with dimensions: 3'-6" (top), 3'-9" (right), and 3'-9" (bottom). The bottom diagram is for bar S770, showing a U-shaped profile with dimensions: 3'-6" (top), 3'-9" (right), and 3'-9" (bottom). The bottom diagram is for bar S771, showing a U-shaped profile with dimensions: 3'-6" (top), 3'-9" (right), and 3'-9" (bottom). The bottom diagram is for bar S772, showing a U-shaped profile with dimensions: 3'-6" (top), 3'-9" (right), and 3'-9" (bottom). The bottom diagram is for bar S773, showing a U-shaped profile with dimensions: 3'-6" (top), 3'-9" (right), and 3'-9" (bottom). The bottom diagram is for bar S774, showing a U-shaped profile with dimensions: 3'-6" (top), 3'-9" (right), and 3'-9" (bottom). The bottom diagram is for bar S775, showing a U-shaped profile with dimensions: 3'-6" (top), 3'-9" (right), and 3'-9" (bottom). The bottom diagram is for bar S776, showing a U-shaped profile with dimensions: 3'-6" (top), 3'-9" (right), and 3'-9" (bottom). The bottom diagram is for bar S777, showing a U-shaped profile with dimensions: 3'-6" (top), 3'-9" (right), and 3'-9" (bottom). The bottom diagram is for bar S778, showing a U-shaped profile with dimensions: 3'-6" (top), 3'-9" (right), and 3'-9" (bottom). The bottom diagram is for bar S779, showing a U-shaped profile with dimensions: 3'-6" (top), 3'-9" (right), and 3'-9" (bottom). The bottom diagram is for bar S780, showing a U-shaped profile with dimensions: 3'-6" (top), 3'-9" (right), and 3'-9" (bottom). The bottom diagram is for bar S781, showing a U-shaped profile with dimensions: 3'-6" (top), 3'-9" (right), and 3'-9" (bottom). The bottom diagram is for bar S782, showing a U-shaped profile with dimensions: 3'-6" (top), 3'-9" (right), and 3'-9" (bottom). The bottom diagram is for bar S783, showing a U-shaped profile with dimensions: 3'-6" (top), 3'-9" (right), and 3'-9" (bottom). The bottom diagram is for bar S784, showing a U-shaped profile with dimensions: 3'-6" (top), 3'-9" (right), and 3'-9" (bottom). The bottom diagram is for bar S785, showing a U-shaped profile with dimensions: 3'-6" (top), 3'-9" (right), and 3'-9" (bottom). The bottom diagram is for bar S786, showing a U-shaped profile with dimensions: 3'-6" (top), 3'-9" (right), and 3'-9" (bottom). The bottom diagram is for bar S787, showing a U-shaped profile with dimensions: 3'-6" (top), 3'-9" (right), and 3'-9" (bottom). The bottom diagram is for bar S788, showing a U-shaped profile with dimensions: 3'-6" (top), 3'-9" (right), and 3'-9" (bottom). The bottom diagram is for bar S789, showing a U-shaped profile with dimensions: 3'-6" (top), 3'-9" (right), and 3'-9" (bottom). The bottom diagram is for bar S790, showing a U-shaped profile with dimensions: 3'-6" (top), 3'-9" (right), and 3'-9" (bottom). The bottom diagram is for bar S791, showing a U-shaped profile with dimensions: 3'-6" (top), 3'-9" (right), and 3'-9" (bottom). The bottom diagram is for bar S792, showing a U-shaped profile with dimensions: 3'-6" (top), 3'-9" (right), and 3'-9" (bottom). The bottom diagram is for bar S793, showing a U-shaped profile with dimensions: 3'-6" (top), 3'-9" (right), and 3'-9" (bottom). The bottom diagram is for bar S794, showing a U-shaped profile with dimensions: 3'-6" (top), 3'-9" (right), and 3'-9" (bottom). The bottom diagram is for bar S795, showing a U-shaped profile with dimensions: 3'-6" (top), 3'-9" (right), and 3'-9" (bottom). The bottom diagram is for bar S796, showing a U-shaped profile with dimensions: 3'-6" (top), 3'-9" (right), and 3'-9" (bottom). The bottom diagram is for bar S797, showing a U-shaped



Note: Joints to be placed 6'-0" at both sides of Int Bent.
TRANSVERSE SLAB JOINTS
No Scale

SHEET 1 OF 4
DETAILS OF CONTINUOUS WELDED PLATE GIRDER UNIT
WARD INTERCHANGE
PULASKI CO. LINE - BEEBE INTERCHANGE
LONOKE COUNTY
ROUTE 67 SEC. II
ARKANSAS STATE HIGHWAY COMMISSION
LITTLE ROCK, ARK.
DRAWN BY: H. H. H. DATE: 6-12-69
CHECKED BY: J. B. C. DATE: 6-12-69
BRIDGE NO. 5336 DRAWING NO. 166